

Rise & shine

Flooded out in 2011 but determined to stay in the neighbourhood, this young Brisbane family simply stepped their dreams up a level.

STORY & STYLING KATE NIXON v PHOTOGRAPHY MAREE HOMER



BACKYARD Homeowners Laura and Alastair Stevenson play with their children, Andreas and Olivia, in the backyard of their revamped home. Umbrella, Basil Bangs. Acapulco chairs, Acapulco Chair Australia. Beanbag, Eco Outdoor. Fiesta blanket, Dos Ombré. Barstools (in kitchen), Green Cathedral. Synthetic turf, Prestige Waterless Turf. Smart buy: Arrow coffee table, \$425, Space to Create. For Where to Buy, see page 196.



This vibrant Brisbane family home is a 2011 flood survivor, repaired and lightly renovated by its previous owners before being purchased by Alastair and Laura Stevenson in 2012. “We were living two streets over at the time and were also flooded,” says Laura. “We were keen to stay in the area because it’s just beautiful and the water only went as high as the skirting boards in this house. Also, I grew up here and a lot of my family are still in the area.”

With thoughts no more specific than to revamp the house and allow the family to “express its personality”, Alastair and Laura consulted local architect Shaun Lockyer. The general intention was to create an open-plan home for their young family, which includes children Andreas, six, and two-year-old Olivia.

“Our previous home was a new build and felt quite stark, so for this place, we wanted lots of light and something a bit outside the box,” says Laura, an interior designer. “We wanted a great inside-outside feel and to showcase the old and new.”

Preserving the postwar cottage was key to bringing the project in on budget. To protect it from potential flood damage in the future, the cottage was raised to accommodate a robust indoor-outdoor living area, study, laundry and garage underneath.

“The whole ground level is, in theory, floodable,” says Shaun. “The decision to use all those solid finishes – exposed blockwork, polished concrete and solid timber for the door and window frames – was so that if, God forbid, it floods again, there would be no permanent damage. The joinery in the laundry and study can simply >

‘WE WANTED A GREAT INSIDE-OUTSIDE FEEL AND TO SHOWCASE THE OLD AND NEW.’ LAURA

KITCHEN/DINING “We were after a really dramatic kitchen,” says Laura. Joinery by T&T Cabinets (throughout). Island benchtop made from blackbutt with Caesarstone Pure White insert. Custom-made dining table, Green Cathedral. Replica Hans Wegner Elbow dining chairs, Replica Furniture. Replica Marcel Wanders Skygarden pendant light, Matt Blatt. Cushions (from left) from Ada & Darcy, Freedom, Ourlieu and Langdon Ltd. Artwork by Shane Bowden.

LIVING Floor-to-ceiling double-hung windows from Aneeta Window Systems are shaded by wide eaves. Flaunt Design ottoman, Hardtofind. Designer Collection Triangle rug, Armadillo&Co. Retro armchair, Freedom. Flynn stool, Jardan.

Designer buy: Jasper Package 1A sofa with walnut shelves, \$8012, King Furniture. For Where to Buy, see page 196.



This is the life

“It’s such a flexible home because of the ability to open up all the sliding doors. We designed the house to grow with us as a family,” says Laura. “The front yard is great for socialising with the neighbours and the side lawn is ideal for entertaining. Most of the time we’re in the living and dining areas, spilling out onto the grass. The lines between indoors and out are completely blurred.”



Dulux Lexicon, quarter strength (interior, throughout)

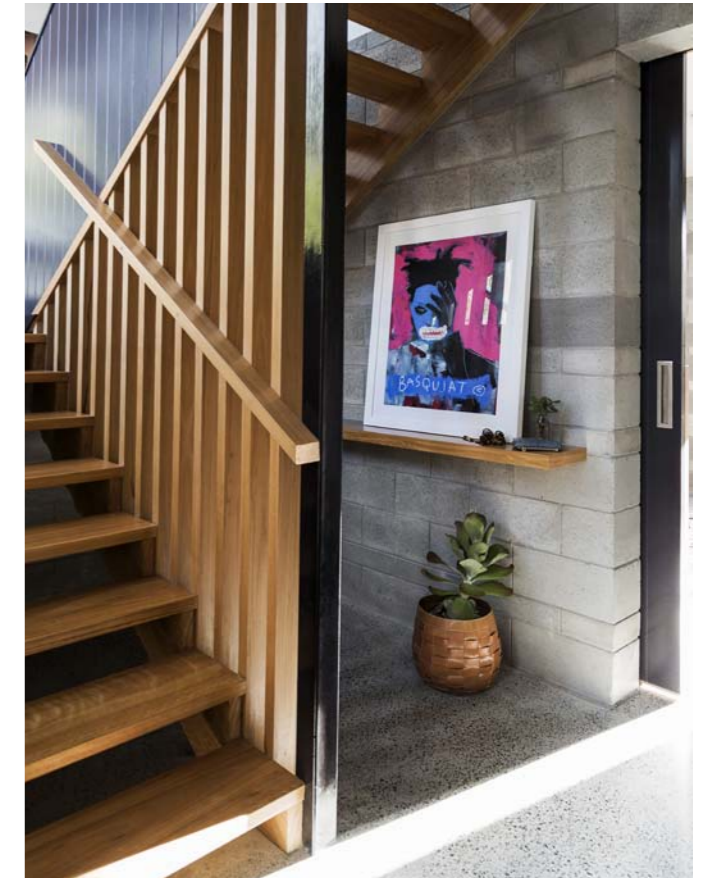
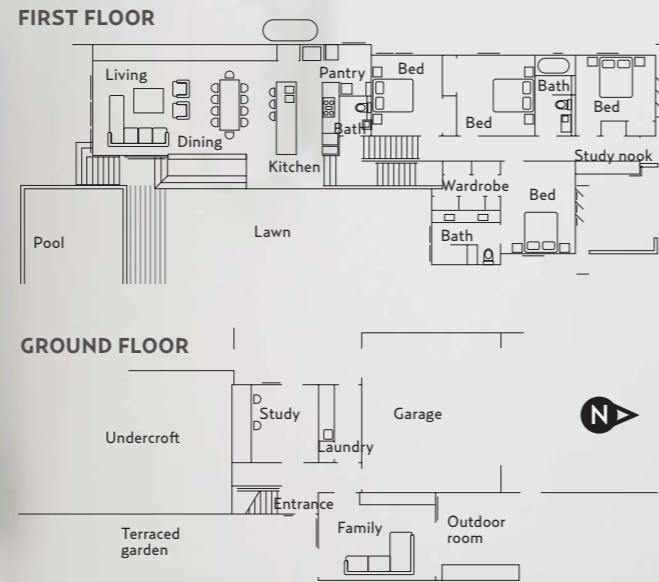
Dulux Klavier (kitchen joinery, staircase trim)

ADD A DASH OF

Resene Escape, half strength

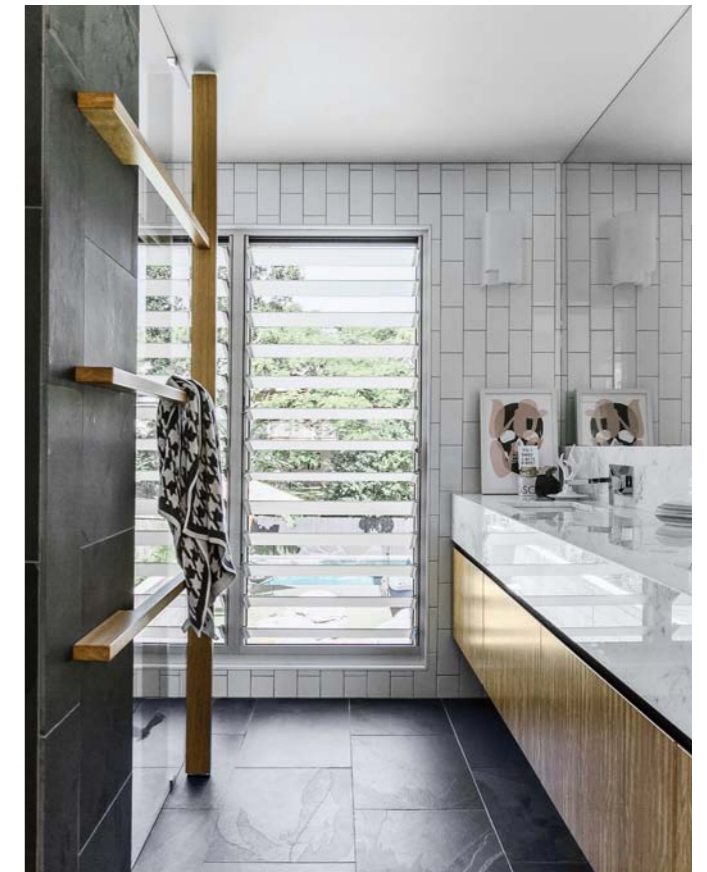
Resene Desire

Vivid, almost fluoro, hues are fun for families and the young at heart.



'SKYLIGHTS IN THE ORIGINAL PART OF THE HOUSE AND PLENTY OF GLASS IN THE ADDITION MEAN WE GET SUN ALL DAY.' LAURA

ANDREAS' BEDROOM Forgiving as well as stylish, charcoal is a great colour choice for children's rooms. Bunks, Domayne. Design House Stockholm floor lamp, Life Interiors. Side table, Kova Lifestyle. Magis Puppy stool/sculpture, Top3 by Design. Condo Plush carpet in Raven, Godfrey Hirst Carpets (throughout).
FOYER A handy shelf by the front door is simply dressed with a Jean-Michel Basquiat art print from Jamieson's Home & Fashion.
ENSUITE "The materials palette is simple but the room feels so luxurious," says Laura. Slate tiles, Eco Outdoor. White ceramic tiles, Parrilla Tiles. Frosted louvres, G.James Glass & Aluminium. Print from Blacklist.
MAIN BEDROOM The artwork by Shane Bowden was the starting point for the bedroom's colour scheme. Side table, Freedom. Lamp, Target. Bedlinen, Country Road (discontinued).
Smart buy: Dasch king-size upholstered bed, from \$1199, Domayne.
 For Where to Buy, see page 196. ➤





< be unscrewed and moved to safety with the furniture and the whole level hosed out.”

A powder room is tucked under the stairs that connect the ground floor with the raised cottage, where four bedrooms, two bathrooms and a study nook occupy the original footprint. A pavilion with open-plan living/dining/kitchen and butler’s pantry was built at the rear.

“Because the home is in a flood zone, the challenge was to address the new planning regulations yet ensure the house felt connected to the ground,” says Shaun. “By raising the cottage to the minimum required height and then using imported fill to build a terraced garden, we were able to create that indoor-outdoor living experience. Getting rid of fill is expensive, so we were able to pick it up for nothing from other sites. The pool forms one retaining wall and the terraced steps the other, making it a very economical way of recontouring the land.”

Shaun’s signature materials palette – timber, black and white – provided the perfect backdrop for Laura and Alastair to add their own colour and personality. “Because we have such a dramatic palette in the architecture, we wanted to embrace colour and pattern in the furniture, art and soft furnishings,” says Laura. “Our style is quite colourful and contemporary – we just choose things that we love, which I think is important in a home. You have to love living in it. And we do.”

**Architect: Shaun Lockyer Architects, Newstead, Queensland; (07) 3257 7288 or www.lockyerarchitects.com.au.
Interior design: Detailco, Chelmer, Queensland; 0435 839 147.**

**‘IF IT FLOODS AGAIN, THE [DOWNSTAIRS] JOINERY CAN BE UNSCREWED AND MOVED TO SAFETY WITH THE FURNITURE.’
SHAUN LOCKYER, ARCHITECT**

STUDY Beckham, the family’s beloved pug, enjoys the cool of the downstairs study. Arrow chair (at desk), Space to Create. Artworks by Lona de Anna (white-framed print) and Erin Flannery (on wall). Heart and pink-framed print, both Typo. Pouf, Ruby Star Traders. Marigold rug, Armadillo&Co. Sliding doors, Architectural Timber Joinery. **Designer buy: Acapulco chair, from \$545, Acapulco Chair.**
OUTDOOR ROOM (this page and opposite) A path lined with hardy, low-maintenance plants guides visitors to the main entrance. Dining table, The Outdoor Furniture Specialists. Chairs, Space to Create. Cushions, Kova Lifestyle. Pot stands, Freedom. Barbecue, Barbeques Galore. Breeze blocks, Boral. For Where to Buy, see page 196.

Paint colours are reproduced as accurately as printing processes allow.



Summer sorted
Louvres and sliding windows make the most of cooling breezes off the nearby Brisbane River. Artificial lawn runs up to the barbecue zone, extending the outdoor entertaining space. “It’s incredibly practical,” says Shaun. “It means you can use furniture and rugs as you would on a finished surface.”