


HOUSES

*Streamlined
and lovely, these
homes make a
case for order in
the house.*

A woman with long brown hair, wearing a black and white grid-patterned sleeveless dress, stands smiling in a modern home's entrance. She is holding a large wooden door open. Next to her is a young girl with curly blonde hair, wearing a light blue dress and white patterned tights. The background shows a staircase with wooden steps and a concrete wall. The overall aesthetic is clean and modern.

Homeowner Kim Bridle and her daughter Millie welcome us into their 'forever' home in Brisbane. Purpose-built, it's designed to evolve and adapt as the children grow. Turn the page to see more.



Clear vision

A sloping bush block close to the city lured a Brisbane couple who could see beyond the trees to the modern home they love.

STORY *Laura Barry* | STYLING *Kate Nixon* | PHOTOGRAPHY *Maree Homer*



DINING Sliding doors retract completely on both sides of the space to create the feeling of an outdoor room. Custom-made dining table, 'Seb' dining chairs, Jordan, Coco Flip 'Coco' pendants, Cult. Rug, Armadillo & Co. Landscaping by Nathan Clausen. **POOL** Owner Kim Bridle looks on as her son Harry splashes in the pool, 'Jil' coffee table, Tait. Cushions, Basil Bangs. **Smart buy:** 'Relax' outdoor sun chairs, \$605 each, Furniture Runway. ▶

KITCHEN *this page and opposite* Interior designer Kim, pictured with sons Tommy (left) and Harry, is behind the contemporary look of her home. 'Altair Powerlouvre' motorised louvres from Breezway are installed at ceiling height for efficient ventilation. Grey ironbark joinery (throughout). Black granite benchtops, Finestone Granite & Marble. Tapware, Brisbane Appliance Sales. Gaggenau oven. Travertine floor tiles (throughout). **Smart buy:** 'Hastings' stools, \$439 each, Green Cathedral.



A 4240m² vacant block just 15 minutes from Brisbane's city centre sounds too good to be true, yet barely anyone turned up to the auction for this enormous property in 2013. Kim and Hugh Bridle did.

"We'd just had our second child and realised how much we would appreciate more space," says Kim. "So, we started looking and found this vacant site - so rare these days - and jumped at the opportunity to build our dream home."

The couple, who run Kalka, a Brisbane-based boutique home builder, were undaunted by the sloping block and its thick bushland; they only saw potential in the property's north-eastern aspect. Director Hugh and interior designer Kim contacted local architect Shaun Lockyer. "We had built a home with Shaun previously and were completely at ease with everything he'd designed for us," says Kim.

A timeless aesthetic and low-maintenance materials were at the top of the wish list for their new home. "It had to be able to grow with our family," Kim explains. "We wanted flexible spaces that could be used for different things as our needs changed."

"The Bridles wanted a single-storey residence with a flat lawn," says Shaun. "They were after a family-friendly house and outdoor environment." To achieve this, trees were cleared and the land recontoured to utilise the flattest areas. "We had to be cruel to be kind here," he says. "Although we took out many trees, the property is still surrounded by them."

Shaun designed a three-storey house with the most-frequented spaces on one level - the ground floor - adjacent to the garden. These include the open-plan kitchen/dining/living area, the children's bedrooms,



home office, family room and games room. Up a flight of stairs are the main bedroom suite and a second study or future nursery. The main entrance and cloakroom, a garage, wine cellar and mini gym are all on the lower ground floor.

Shaun also designed separate outdoor living and dining rooms to give the family additional play and entertaining options. The swimming pool and a 1500m²

expanse of level lawn complete the picture. Much of the landscaping was done by the couple's friend, Nathan Clausen of PDT Architects, as a private job. Nathan was on board from the very beginning of the project, which meant the house and garden could be designed as one harmonious unit.

Kim and Hugh endorsed the extensive use of concrete and timber early on, wanting their 'forever' home to be robust and hardwearing enough to see their children through the teenage years and beyond. "We both love Modernism, and the use of timber and natural materials in a build, so there's a lot of concrete here but it's softened by timber and natural stone," says Kim.

"The main living area has the best indoor-outdoor connection," she says. "It makes us feel like we spend most of our time outdoors, even though we're inside." For the three children - Harry, six, Tommy, four, and Millie, two - the openness of the living areas means activities can transition from indoors to out freely, yet their parents can keep an eye on them from their workspaces or the kitchen.

"This is a typical family home... constantly evolving and accommodating new furniture and artworks," says Kim. "It's everything we wanted."

Shaun Lockyer Architects, Newstead, Queensland;
(07) 3257 7288 or lockyerarchitects.com.au.

EARTHY & ROBUST

Grey ironbark joinery

Concrete

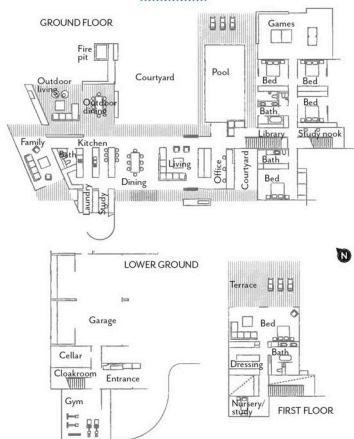
Travertine floor tiles

Store & order

"Storage was a major focus for us," says Kim. "Shaun added shelves, drawers and cupboards wherever they would fit, and built storage into a lot of the joinery. All this really minimises mess because there's a dedicated space for everything. Fold-out storage is integrated into the kitchen, too. Having the fridge and other appliances hidden away further reduces visual clutter."

LIVING Shaun designed cupboards above as well as drawers below the TV. Butterfly chair, The Modern Furniture Store. Sofa and timber side table, Jardan. Coffee tables and metal side table, Cult. Louvres, Breezway. Ceiling fan, Big Ass Fans. **Smart buy:** 'Danny Weave' rug in Chalk/Charcoal, from \$1150, Milk & Sugar. **NOOK** A built-in bench seat transforms a sunny nook into a reading nook adjacent to the kitchen. **OUTDOOR DINING** Hugh and the boys share a joke. Chairs and coffee table, all Jardan. Custom dining table, Barbecue, Smeg. ▶

THE LAYOUT



FEATURE TREES
& PLANTS

TREES

Weeping lilly pilly
(*Waterhousea floribunda*)
Weeping fig
(*Ficus benjamina*)

PLANTS

Cordyline 'Negra'
Liriope 'Evergreen Giant'
Native violet
Empire Zoysia turf

This is the life

"Hugh and I both grew up on rural properties and wanted to replicate that lifestyle for our children, but closer to the city, where we work," says Kim. "We love the extra space and freedom the kids have now. It's great not having to go out and find a park for them to run around." The home's design is flexible enough to ensure that it will suit the Bridles' needs well into the future.





DRESSING ROOM Building from scratch allowed Kim, pictured with Millie, to set up the walk-in wardrobe of her dreams. George Nelson pendant lights, Lumen 8 Architectural Lighting, Cushions, Jordan. 'Tussore Pitch' carpet, Cavalier Bremworth. **MAIN ENSUITE** A river pebble-like Apaiser bath contributes to the home's overall natural feel. The shower and toilet are hidden behind the ironbark wall. Bath and bath filler, both Rogerseller. Side table, Freedom. Travertine wall and floor tiles. Custom wall lights. **MAIN BEDROOM** Lower ceilings, separation from the rest of the house and treetop views make for a serene sanctuary. Curtains in Warwick Fabrics 'Eliani', made by Cuchi. Bedside table, Cult. **Smart buy:** 'Smith' armchair, \$1099, Barnaby Lane. **OUTDOOR DINING** The built-in fire pit means the alfresco zone can be used year round. *For Where to Buy, see page 188. H&G*



This is the life

While there are separate living zones for children and adults, all the areas of this Fremantle property are conducive to sharing good times. The front of the house has been remodelled and now features an expanded verandah and wide steps where the teens and their friends like to chill out. In the rear extension, glass sliding doors open up completely to the outdoor areas and pool for alfresco living, entertaining and play.

