



## OPPOSITES ATTRACT

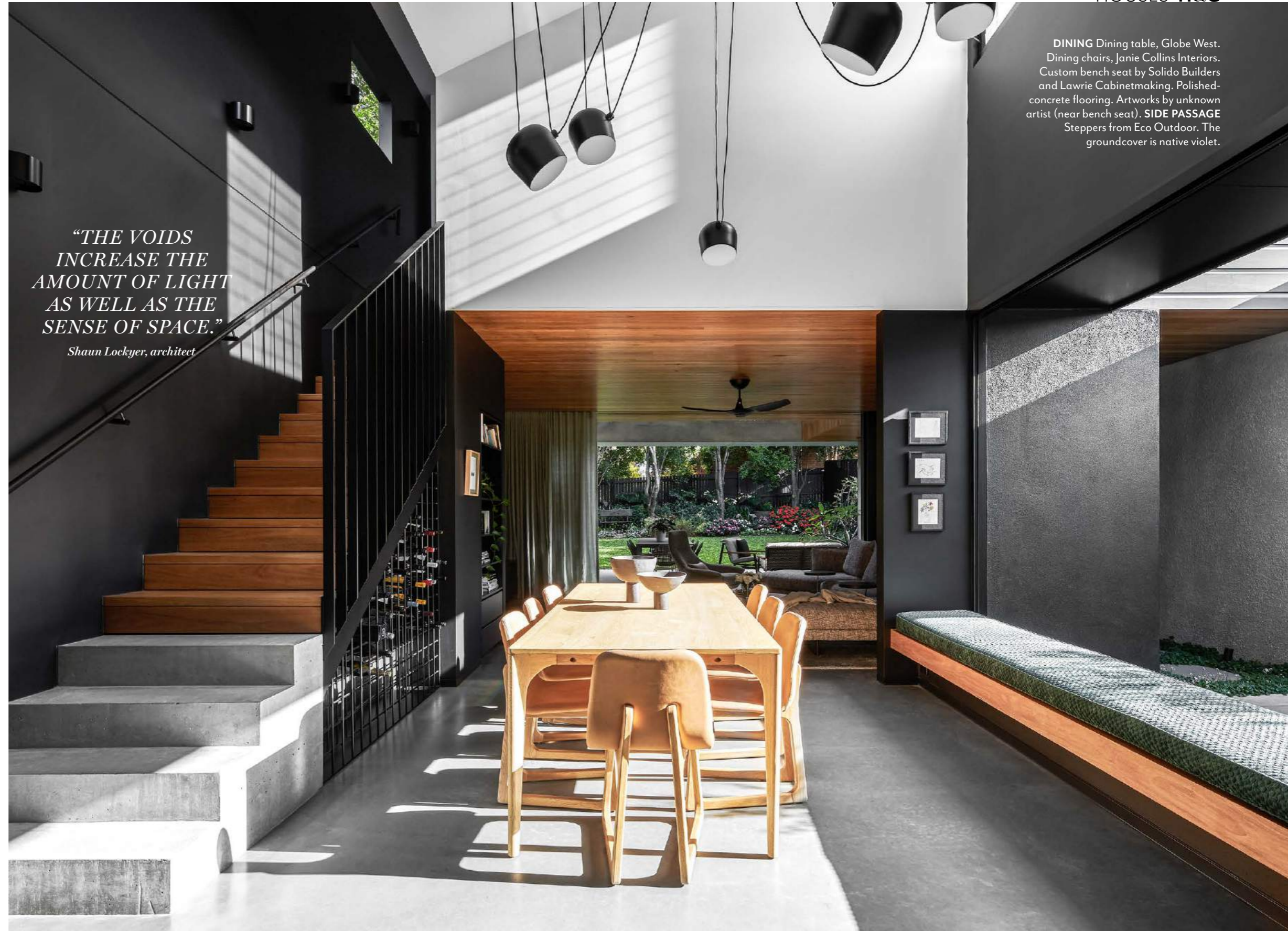
A contemporary extension brought a Brisbane Queenslander into the 21st century, making it ready to be enjoyed for generations to come.

STORY *Stephen Crafti & Tamarah Pienaar* | PHOTOGRAPHY *Andy Macpherson*



HOUSES H&G

**REAR EXTERIOR** *This page* Vanguard Louvretec screens. Dining table, Cosh Living. Dining chairs, Janie Collins Interiors. Outdoor sofa and armchair, Jordan. Stepping stones, Eco Outdoor. **STREET ENTRANCE** *Opposite* A cheery bougainvillea is a welcoming sight at the revamped front entrance.



*“THE VOIDS  
INCREASE THE  
AMOUNT OF LIGHT  
AS WELL AS THE  
SENSE OF SPACE.”*

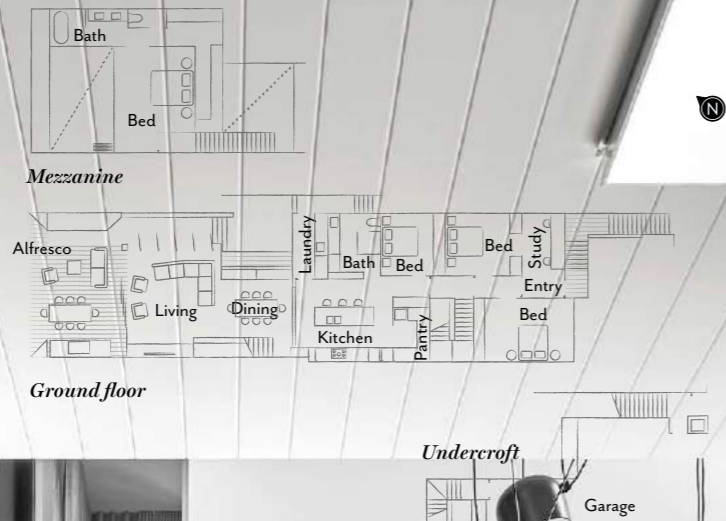
*Shaun Lockyer, architect*

**DINING** Dining table, Globe West. Dining chairs, Janie Collins Interiors. Custom bench seat by Solido Builders and Lawrie Cabinetmaking. Polished-concrete flooring. Artworks by unknown artist (near bench seat). **SIDE PASSAGE** Steppers from Eco Outdoor. The groundcover is native violet.

Weatherboard Queenslanders are a ubiquitous - and much loved - part of Brisbane's urban landscape. Now that these buildings are a century or so old, however, many are beginning to show their age in looks, layout or liveability. This Queensland, located in a sought-after city-fringe suburb, has been beautifully restored for current and future generations to enjoy, but there's an additional surprise beyond the threshold: a striking concrete, glass and steel addition that delivers year-round comfort and joy.

Reworked by Shaun Lockyer Architects for a Brisbane couple, the existing three-bedroom cottage was comfortable enough but there was little connection to the rear garden, which was overlooked by neighbours. "Privacy was a major concern, but we didn't want to resolve it at the expense of natural light," says Shaun. ▶

THE LAYOUT



Rather than designing one large open-plan kitchen/dining/living space in the extension, Shaun and project architect Matt Napper designed a series of separate but connected zones for communal enjoyment. There's also a new main bedroom suite on a mezzanine level, a nod to the traditional Queensland verandah. Zoning was particularly important in the revamp, says Shaun, as this reduces the need for artificial heating or cooling.

Six-metre-high voids over both the indoor and outdoor dining areas funnel natural light into the living room sited between them and through to the sleek, centrally located kitchen, where a skylight further boosts the brightness. "The voids increase the amount of light as well as the sense of space," says Shaun.

Adjustable metal screens are strategically placed on top of a concrete wall that forms the northern boundary of the extension, providing shade and privacy for the main bedroom suite and the living area below. A mesh 'veil' was installed along the eastern side of the home, allowing light and fresh air in but protecting the occupants from prying eyes. The overall effect is utterly tranquil - like being cloistered in a walled garden.

The striking concrete, black and dark-timber palette of the extension is, perhaps, an unlikely choice. ▶

**LIVING** Sofa and armchair, King. Coffee table and side table, Globe West. Haiku ceiling fan, Big Ass Fans. Curtains, Cuchi Window Coverings. The ceiling and wall at left are clad in blackbutt. **KITCHEN** Joinery by Lawrie Cabinetmaking. Artetech Terra Nero porcelain benchtop, Artedomus. Cabinetry in Laminex Absolute Matte Black (left). Easy VJ cladding (right), Easycraft. Artwork by unknown artist. A bathroom is tucked behind the bookcase wall; the laundry is through the doorway just beyond it.





**OUTDOOR DINING/LIVING** Dining table, Cosh Living. Dining chairs, Janie Collins Interiors. Vogue Ghiaccio tiles, Classic Ceramics. Bifolds by G. James. Stainless-steel splashback. Blackbutt cladding. ▶

“The owners say visitors are always surprised when they see it for the first time,” says Shaun. But there is nothing but harmony as you move through the house. Crisp white is used extensively in the original part of the home, allowing the beautiful period features to sing. The floors in this area are newly black-japanned for contrast and as a lead-in to the drama of the extension.

A glass door leading from the bedroom wing to the kitchen marks the transition point between private and public as well as old and new. The kitchen is also where the moodier scheme comes to the fore. Full-height black-laminate cabinetry occupies one wall and extends into the butler’s pantry, with all appliances neatly integrated into this joinery. A generous island bench, topped with porcelain – a hard-wearing and low-maintenance choice – offers a place to pause and enjoy the framed views of the garden before you step into the extension proper. ▶

**“YOU NEVER FEEL CLOSED IN,  
JUST WELL PROTECTED.”**

*Shaun Lockyer, architect*



**MAIN ENSUITE** A walk-in shower and Kado Lux Petite bath from Reece are contained in a ‘wet zone’. Custom blackbutt vanity. Icon tapware, Astrá Walker. Vogue Ghiaccio wall tiles and Sorrento Grigio floor tiles, Classic Ceramics. **COURTYARD** *Opposite top* The built-in bench seat bordering the courtyard is an ideal spot to relax with a book. **OUTDOOR LIVING** *Opposite bottom* Outdoor sofa and armchair, Jardan. Blackbutt shiplap cladding.



THE PALETTE

Dulux Black  
(extension,  
main walls)

Dulux  
Lexicon Quarter  
(mezzanine  
interior)

Porter's Paints  
Paloma

Beyond the kitchen, the dining and living areas flow seamlessly from one to the other and into the outdoor living/dining area and garden beyond. Interior decorator Carlene Duffy collaborated with the Shaun Lockyer team on the furniture selection; the result is simply but elegantly furnished spaces that add to the overall sense of calm.

The outdoor room is a particularly enjoyable place for the owners and their guests to while away the time. Merging with the garden but completely sheltered from the elements, it has, unsurprisingly, become a favourite haunt. "You never feel closed in, just well protected," says Shaun.

*Shaun Lockyer Architects, Newstead, Queensland;*  
*(07) 3257 7288 or lockyerarchitects.com.au. Solido*  
*Builders, Brisbane, Queensland; solidobuilders.com.au.*

**MAIN BEDROOM** *Above and right* Haiku ceiling fan, Big Ass Fans. Curtains, Cuchi Window Coverings.



1

THE SOURCE

*Touches of grey, white and black lend drama and sophistication to any interiors scheme.*

4



Produced by Saffron Sylvester. Paint colours are reproduced as accurately as printing processes allow.

1 Cotton gauze **quilt cover set**, \$265/double size, In Bed. 2 Aim **suspension light**, from \$1147, Living Edge. 3 One 2 Three **table lamp**, \$790, MCM House. 4 Camero Arctic Slate **luxury vinyl**, POA, Polyflor. 5 Søborg **chair**, from \$1480, Cult Design. 6 Olive **outdoor cushion**, \$49, Domayne. 7 Basic Charcoal **outdoor cushion**, \$49, Domayne. 8 Allia **planter**, from \$145, Coco Republic. 9 Medium Loft **pillow**, \$69.95, Dentons. 10 Charlotte Arch **floor mirror**, \$1795, Coco Republic. 11 Arflex 'Bel Air' **sofa** by Claesson Koivisto Rune, \$10,095, Space. *For Where to Buy, see page 192. H&G*